

CRANE DETAILS - SINGLE CRANE LIFT

MAKE	LIEBHERR	
MODEL	LTM 1095	
CRANE MRC	95	t
LMI CODE	0043	
CONFIGURATION	T	
COUNTERWEIGHT	13.6	t
MAIN BOOM LENGTH	20.8	m
MAIN BOOM CONFIG.	0,0,46,46,0	%
JIB TYPE / OFFSET	NOT FITTED	°
JIB LENGTH	-	m
MAIN / AUX. HOOK?	MAIN	
DEM CHART WIND SPEED	14.3	m/sec

LOAD DETAILS

MAX. LOAD SHARE	19300	kgs
CRANE COMPONENTS	590	kgs
RIGGING	100	kgs
TOTAL LIFT WEIGHT	19990	kgs

LIFT DETAILS

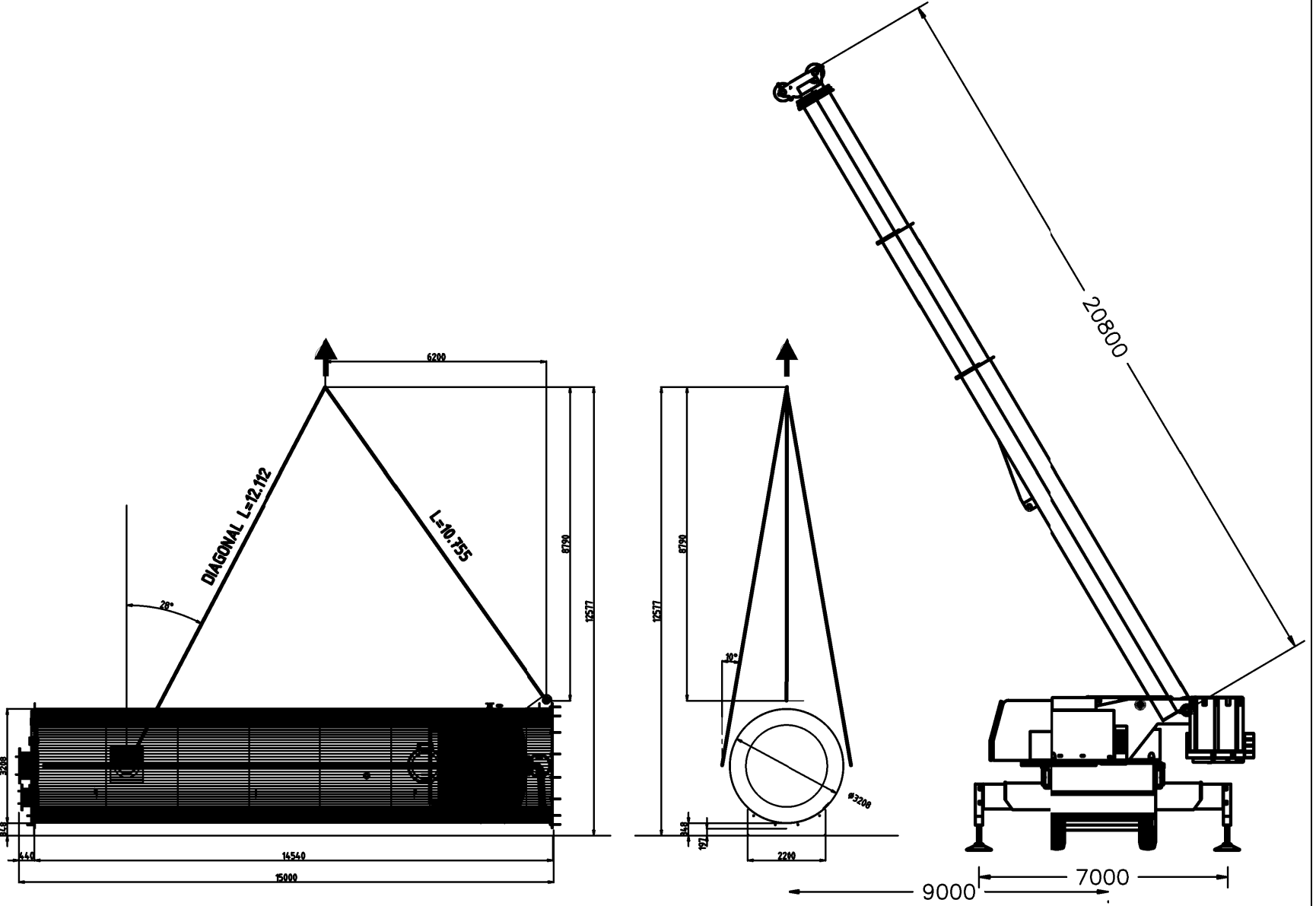
MAXIMUM LIFT RADIUS	9	m
SWL AT MAX. RADIUS	27500	kgs
UTILISATION	72.7	%
SPARE CAPACITY	7510	kgs

REEVING CHECK

LINE PULL	5700	kgs
No. OF PARTS	4	
FACTORED LINE PULL	22800	kgs
LOAD TO HOOK	19990	kgs
REEVING UTILISATION	87.7	%

GROUND BEARING PRESSURES (MAXIMUM)

OUTRIGGER PAD SIZE	1.0	x	1.0	m
OUTRIGGER PAD AREA	1.0			m ²
OUTRIGGER PAD WEIGHT	0.1			t
MAXIMUM JACK FORCE	36.0			t
TOTAL IDWN FORCE	36.1			t
PRESSURE UNDER PAD	36.1			t/m ²
PRESSURE UNDER PAD	354.1			kPa



HORIZONTAL LIFTING

DISCLAIMER:
THE INFORMATION DISPLAYED/DRAWN IN THIS DOCUMENT IS BASED ON INFORMATION PROVIDED BY THE NAMED CLIENT AND OR NAMED PERSON NO LIFT OR PROCEDURE SHOULD BE CARRIED OUT WITHOUT THE OPERATOR FIRST CONSULTING WITH THE OEM LOAD CHART/MANUAL AND DETERMINING SUITABILITY
IT IS ASSUMED THAT ALL OVERHEAD & UNDERGROUND HAZARDS HAVE BEEN IDENTIFIED AND MANAGED APPROPRIATELY
IT IS ASSUMED THAT THE GROUND OR OTHER SUPPORTING STRUCTURE IS LEVEL AND SUFFICIENT FOR THE CRANE & LOAD UNDER ALL OPERATING CONDITIONS
THIS DOCUMENT IS A GUIDE ONLY. THE CRANE OPERATOR MUST DETERMINE THE MOST SUITABLE CONFIGURATION FOR THE PROPOSED LIFT



CLIENT NAME:	CRANE TYPE:	CREATED BY:	DATE:
BITUTEK	SLEWING	ANDRE BUCCI	13/07/21
LIFT DESCRIPTION:	LIFT TYPE:	ATTACHED DOCS:	SCALE:
19.3T TANK	SINGLE CRANE		N/A